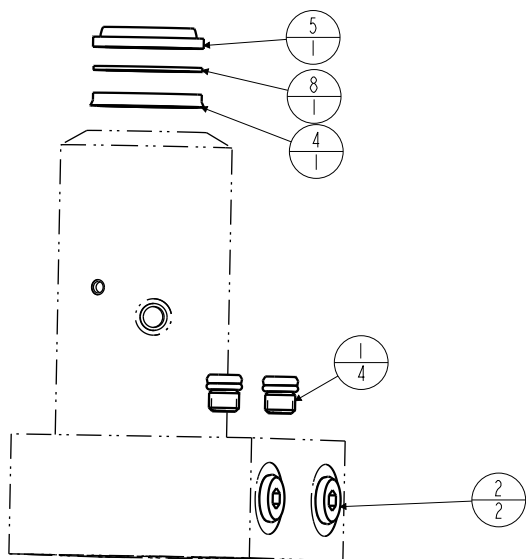
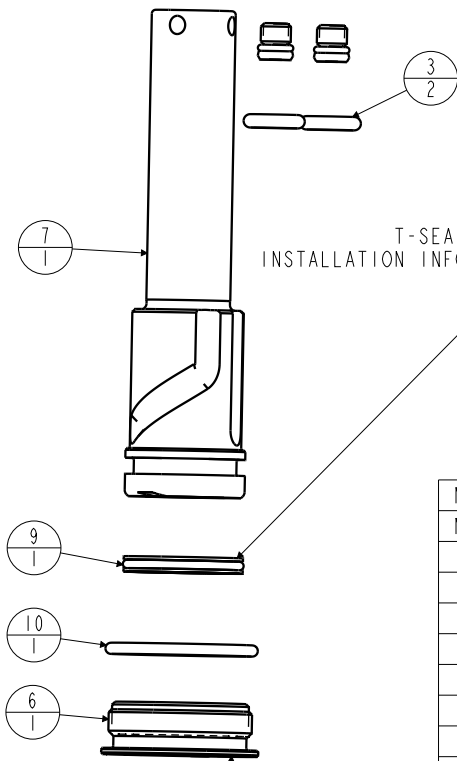
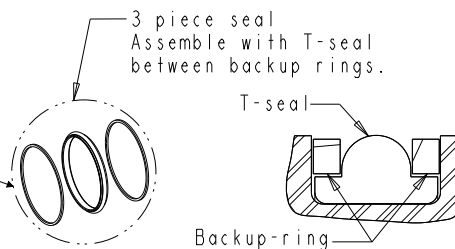


LUBRICATE ALL SEALS WITH CLEAN HYDRAULIC OIL PRIOR TO ASSEMBLY. DO NOT USE SILICONE BASED LUBRICANTS.



T-SEAL INSTALLATION INFO



TIGHTEN TO 30 FT-LBS TORQUE

N/A	N/A	6V252204	KIT, SEAL, FKM	N/A	NOTED
N/A	N/A	60252204	KIT, SEAL, STANDARD	NOTED	N/A
10	1	39V51043	O-RING, (-918)	X	39V51043
9	1	39H11030	SEAL, T, (1 1/16X5/32X1 1/4)	X	39V11030
8	1	39F54002	BU RING, (-212 CUSTOM)	X	39F54002
7	1	81511301	PLUNGER, SC, 2600#		
6	1	81400030	RETAINER, SC, HS, 2600		
5	1	39053000	WIPER, SNAP-IN, (7/8)	X	39053000
4	1	39011046	SEAL, BEVEL W/HEEL INSERT, 7/8 x 1/8 x 1 1/8	X	39V11046
3	2	39000050	O-RING, (-204)	X	39051022
2	2	30601144	PLUG, SOCH, SAE 4		
1	4	30601122	PLUG, SOCH, SAE 2		
No.	QTY	PART No.	DESCRIPTION	STANDARD SEAL KIT	FKM SEAL KIT

PARTS LIST



VEKTEK, INC.
1334 E. SIXTH AVE. P.O. BOX 625
EMPORIA, KS. 66801 U.S.A.

ASSEMBLIES AFFECTED
25221302
25221302F

PARTS LIST, ASSY, CYL, PP, BF, 3000/1400

SIZE A
PL2510

REV A

A	4431	RELEASE	NPETERS	5/13/21
REV	IN ACCORDANCE WITH ECN	EFFECTIVE DATE	REVISED BY	DATE
DRW BY:	NPETERS	DRAWING STATUS: Released		
DATE:	5/13/21	PRODUCTION APPROVED FOR RELEASED STATUS ONLY		

FORM FEG035_PL_ASIZE, REV. B

SHEET 1 OF 1